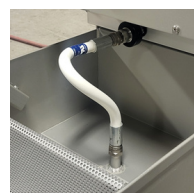
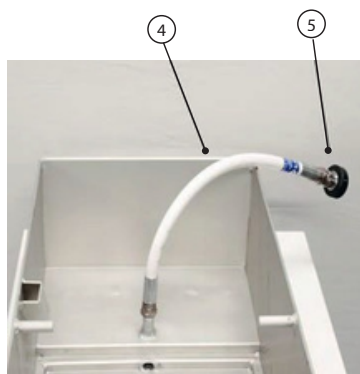
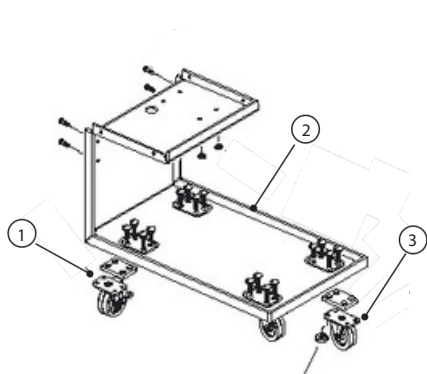


# Parts

## VACUUM FILTER MACHINE FOR FRYING OIL Service Bulletin

Need assistance identifying a part on your LS-2 Machine? Refer to the guide below to serve as a service and parts aid.



17" hose for LS-2-60 & LS-2-100/F-33



21" hose for LS-2-100/F-40



Castor

Quick Disconnect



6 Support Screen



7 Hold Down Bar



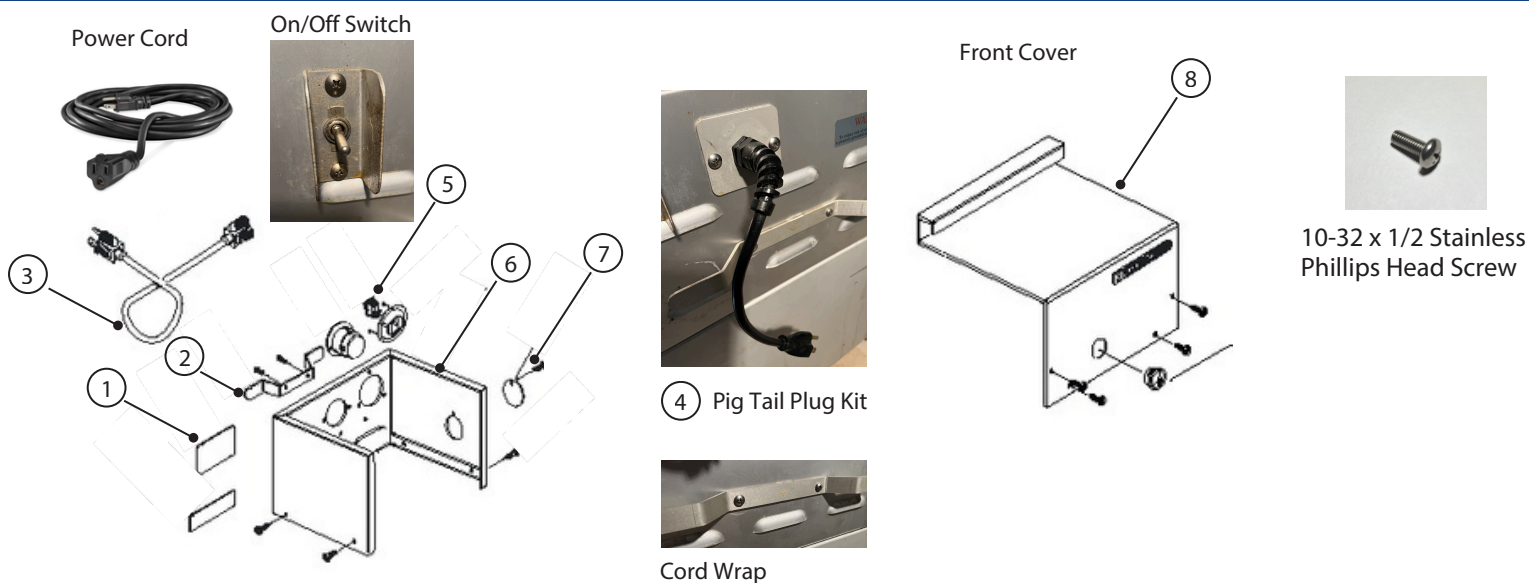
8 Crumb Basket

ITEM	PART NUMBER	DESCRIPTION
1	848-04 861	2.5" Caster (Swivel with Brake), Aluminum Units 2" Rear Caster (Swivel with Brake)
2	845-01 AL 846 - 07	Filter Base/Frame (LS-2-60) Filter Base/Frame (LS-2-100)
3	860	2" Front Caster (Rigid)
4	1064	Pick Up Hose—3/8" × 21" L w/3/8" male fittings
5	1012 1012A	Quick Disconnect Fitting, Snaptite, 3/8" Female, NPT Safety Donut for Part #1012
6	69002818 69002827 69002842	F-16 Support Screen F-40 Support Screen F-33 Support Screen
7	69002825 69002824 69002830	F-16 Hold Down Bar F-40 Hold Down Bar F-33 Hold Down Bar
8	69002826	Crumb Basket (All Sizes)

# Parts

## VACUUM FILTER MACHINE FOR FRYING OIL Service Bulletin

Need assistance identifying a part on your LS-2 Machine? Refer to the guide below to serve as a service and parts aid.



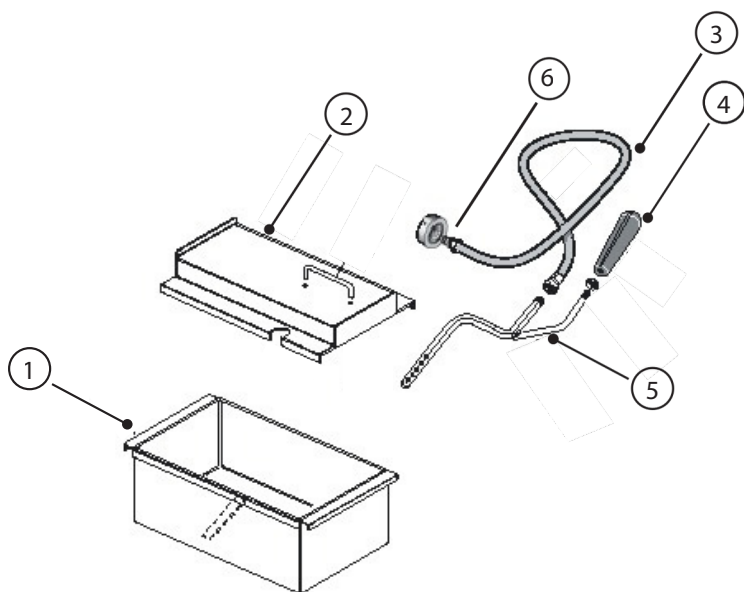
ITEM	PART NUMBER	DESCRIPTION
1		Identification Plate
2	847-08	Cord Wrap
3	870	Electrical Power Cord – 12 ft., 110 volt, 3 prong
4	847- 62Kit	Pig Tail Plug Kit
5	847- 01	On-Off Switch
6	847- 07	Rear Panel
7	847-09	Reset Button Cover
8	847-06	Front Cover



# Parts

## VACUUM FILTER MACHINE FOR FRYING OIL Service Bulletin

Need assistance identifying a part on your LS-2 Machine? Refer to the guide below to serve as a service and parts aid.



3/8" Male Outer Disconnect



Wand



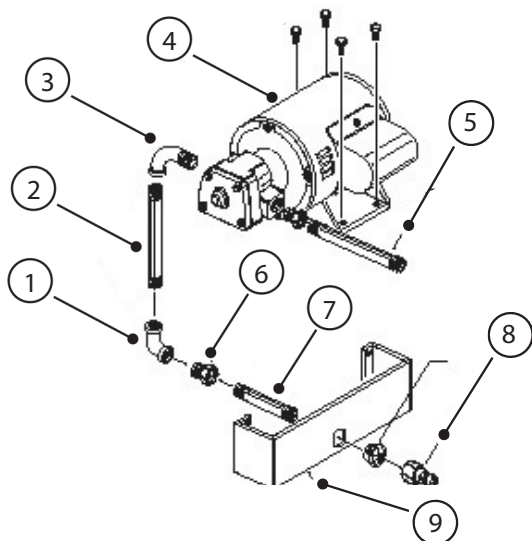
Handle

ITEM	PART NUMBER	DESCRIPTION
1	69002812 69002817 69002816 69002820	LS-2-60 F-16 Sump Pan LS-2-60 F-40 Sump Pan LS-2-100 F-40 Sump Pan LS-2-100 F-33 Sump Pan
2	845-02AL 846-06	Bucket Cover (LS-2-60) Bucket Cover (LS-2-100)
3	855	62" Return Hose
4	856X W	Nozzle White Poly Hand
5	856AL	Hand Nozzle Shower Spray (1 Bend)
6	1015	3/8" Male Quick Disconnect

# Parts

## VACUUM FILTER MACHINE FOR FRYING OIL Service Bulletin

Need assistance identifying a part on your LS-2 Machine? Refer to the guide below to serve as a service and parts aid.



Pump



3/8" Male NPT



Quick Disconnect

ITEM	PART NUMBER	DESCRIPTION
1	867	Elbow – galv. 1/2", 90 degree elbow, NPT
2	869	Pipe Nipple – galv., 3/8" × 7", NPT
3	866	Pipe Elbow – galv., 1/2", 90 degree street elbow, NPT
4	850PM 850A 850PP 850M	Pump/Motor Assembly – Viking SG-0510 with plug adapter 110 volts, 60 cycle Pump Pump only Motor only
5	869	Pipe Nipple – galv., 3/8" × 7", NPT
6	868	Hex Bushing – galv. 1/2" × 3/8", NPT
7	865	Pipe Nipple – galv. 3/8" × 2", NPT
8	1015	Quick Disconnect Fitting 3/8" Male NPT
9	847-05	Bottom Panel